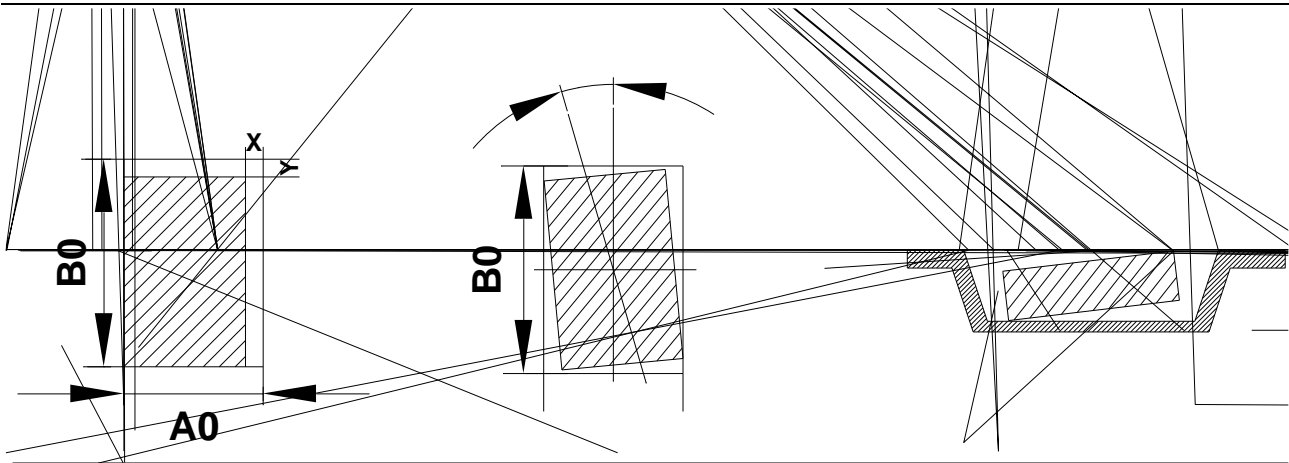


◆ Packing Quantity and Device Tape Orientation

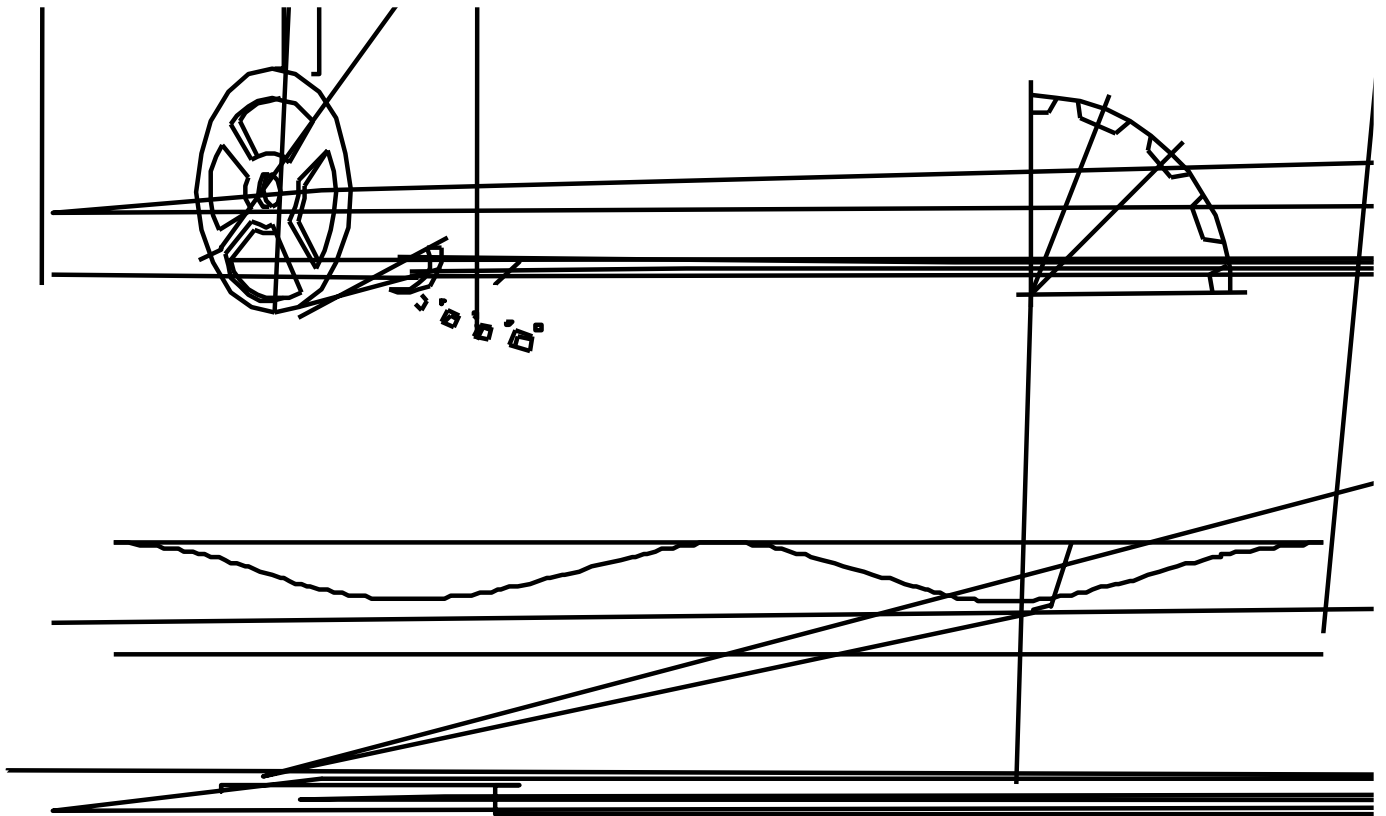
Package	Tape Width h	Reel Size	Pitch	Packaging Quantity			Tape Orientation Feed Direction	OPN Suffix
				Reel	Inner Box	Carton		



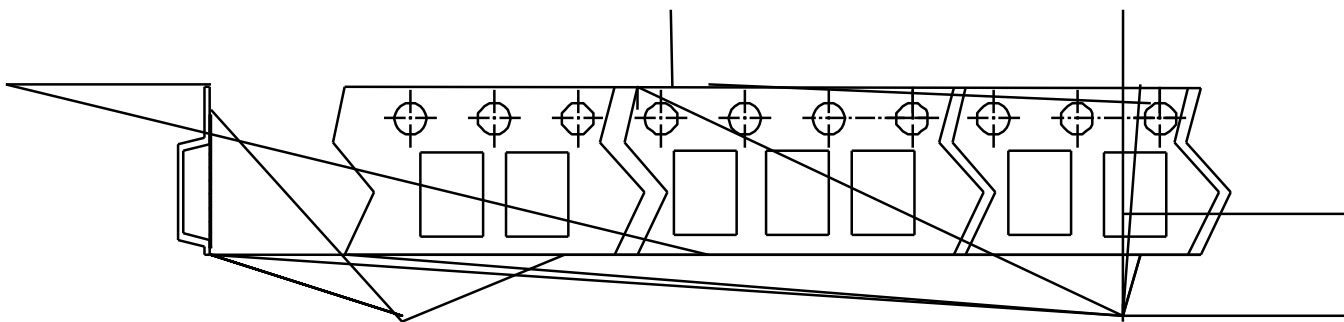
Tape width	8,12mm
X(mm)	0.5
Y(mm)	0.5

Maximum Component Rotation
Tape width

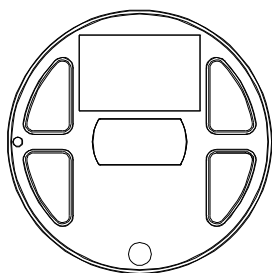
◆ Embossed Carrier Tape Specifications



◆ Start and Finish Specification



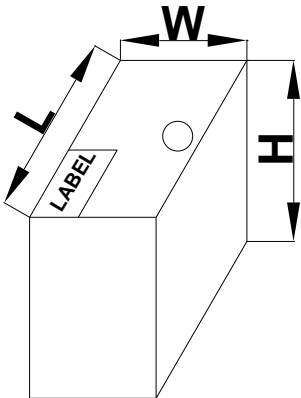
◆ Surface Mount Reel Specifications



Tape Width	A(mm)	B(mm)	C(mm)	D(mm)	N(mm)	G(mm)	T(mm)
7 寸 8mm	178	2.3	13.5	21.1	54.4	9.3	9.3
(Tolerance)	±1	±0.3	±0.3	±0.3	±0.5	±1.5	无阻碍

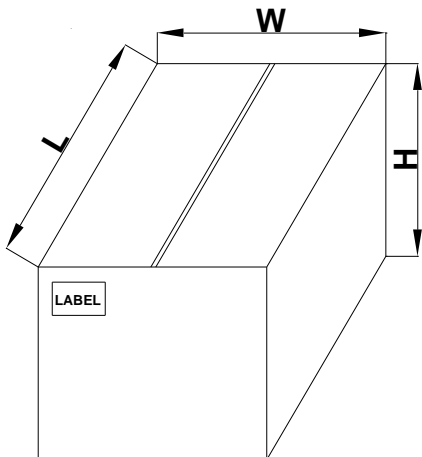
◆ Dimensions

Inbox Size



Dimension	Specification(mm typical)	
	General	ESD/MBB Bag
Reel Size	7 inch	7 inch
L	187±2	245±2
W	130±2	145±2
H	187±2	212±2

Carton Size



Dimension	Specification(mm typical)	
	General	ESD/MBB Bag
Reel Size	7 inch	7 inch
L	390±5	510±5
W	275±5	305±5
H	207±5	235±5