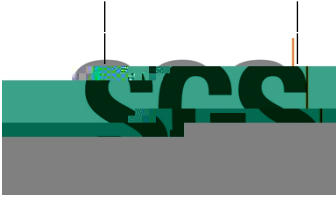


Test Report

No.:



Test Report

No.: SHAEC25021151207

Date: Aug 21, 2025

Page 2 of 16

Test Result(s):

Test Part Description

SN ID	Sample No.	SGS Sample ID	Description
SN1	A1	SHA25-0211512-0001.C001	Silvery/dark grey solid sheet

Remarks:

- (1) 1 mg/kg = 1 ppm = 0.0001%
- (2) MDL = Method Detection Limit
- (3) ND = Not Detected (< MDL)
- (4) "-" = Not Regulated

EU RoHS Directive (EU1() grey solid sheet



Test Report

No.: SHAEC25021151207

Date: Aug 21, 2025

Page 3 of 16

Test Item(s)	Limit	Unit(s)	MDL	A1
Octabrominated diphenyl ether (OctaBDE)	-	mg/kg	25	ND
Nonabrominated diphenyl ether (NonaBDE)	-	mg/kg	25	ND
Decabrominated diphenyl ether (DecaBDE)	-	mg/kg	25	ND
Bis(2-ethylhexyl) phthalate (DEHP)	1000	mg/kg	50	ND
Butyl benzyl phthalate (BBP)	1000	mg/kg	50	ND
Dibutyl Phthalate (DBP)	1000	mg/kg	50	ND
Diisobutyl Phthalate (DIBP)	1000	mg/kg	50	ND

Notes:

- (1) The maximum permissible limit is quoted from RoHS Directive (EU) 2015/863.
- (2) IEC 62321 series is equivalent to EN 62321 series.
- (3) The restriction of DEHP, BBP, DBP and DIBP shall apply to medical devices, including in vitro medical devices, and monitoring and control instruments, including industrial monitoring and control instruments, from 22 July 2021.

Element(s)

Test Method: With reference to US EPA 3052:1996, analysis was performed by ICP-OES/AAS.

Test Item(s)	Unit(s)	MDL	A1
Arsenic(As)	mg/kg	10	234
Beryllium(Be)	mg/kg	5	ND
Antimony(Sb)	mg/kg	10	ND

Halogen

Test Method: With reference to EN 14582:2016, analysis was performed by IC.

Test Item(s)	Unit(s)	MDL	A1
Fluorine(F)	mg/kg	20	ND
Chlorine(Cl)	mg/kg	50	ND
Bromine(Br)	mg/kg	50	ND
Iodine(I)	mg/kg	50	ND

Medium Chain Chlorinated Paraffin(C14-C17)(MCCP)

Test Method: With reference to ISO 18219-2:2021, analysis was performed by GC-NCI-MS.

Test Item(s)	CAS No.	Unit(s)	MDL	A1
Medium Chain Chlorinated Paraffin(C ₁₄ -C ₁₇)(MCCP)	85535-85-9	mg/kg	50	ND

TBBP-A

Test Method: With reference to US EPA 3540C:1996, analysis was performed by GC-MS/LC-MS.



Test Report

No.: SHAEC25021151207

Date: Aug 21, 2025

Page 4 of 16

Test Item(s)	CAS No.	Unit(s)	MDL	A1
TBBP-A	79-94-7	mg/kg	10	ND

Hexabromocyclododecane (HBCDD)



Test Report

No.: SHAEC25021151207

Date: Aug 21, 2025

Page 5 of 16

Perfluorooctane sulfonic acid (PFOS)	1763-23-1
Potassium Perfluorooctanesulfonate (PFOS-K)	2795-39-3
Perfluorooctanesulfonic acid, lithium salt (PFOS-Li)	29457-72-5
Sodium perfluorooctanesulfonate (PFOS-Na)	4021-47-0
Ammonium perfluorooctanesulfonate (PFOS-NH ₄)	29081-56-9
Perfluorooctane sulfonate diethanolamine salt (PFOS-NH ₂ (C ₂ H ₄ OH) ₂)	70225-14-8
Perfluorooctanesulfonic acid, tetraethylammonium salt (PFOS-N(C ₂ H ₅) ₄)	56773-42-3
N-decyl-N,N-dimethyldecyl-1-aminium 1,1,2,2,3,3,4,4,5,5,6,6,7,7,8,8,8-heptadecafluorooctane-1-sulfonate (PFOS-N(C ₁₀ H ₂₁) ₂ (CH ₃) ₂)	251099-16-8
TetrabutylAmmonium perfluorooctanesulfonate (PFOS-N(C ₄ H ₉) ₄)	111873-33-7
Perfluorooctane Sulfonyl fluoride (PFOS-F)	307-35-7
Magnesium bis(heptadecafluorooctanesulphonate) (PFOS-Mg)	91036-71-4
Piperidine 1,1,2,2,3,3,4,4,5,5,6,6,7,7,8,8,8-heptadecafluorooctanesulfonate	71463-74-6
Perfluorooctanesulfonate	45298-90-6
Triethylammonium perfluorooctane sulfonate (PFOS-N(C ₂ H ₅) ₃)	54439-46-2
N,N,N-Tripropylpentan-1-aminium heptadecafluorooctane-1-sulfonate (PFOS-N(C ₃ H ₇) ₃ H ₁₁)	56773-56-9



Test Report

No.: SHAEC25021151207

Date: Aug 21, 2025

Page 6 of 16

Sodium 2-(N-ethylperfluorooctanesulfonamido)acetate (N-Et-FOSAA-Na)

3871-50-9

PFOSA, its salts

Perfluorooctane Sulfonamide (PFOSA)

754-91-6

756702-799



Test Report

No.: SHAEC25021151207

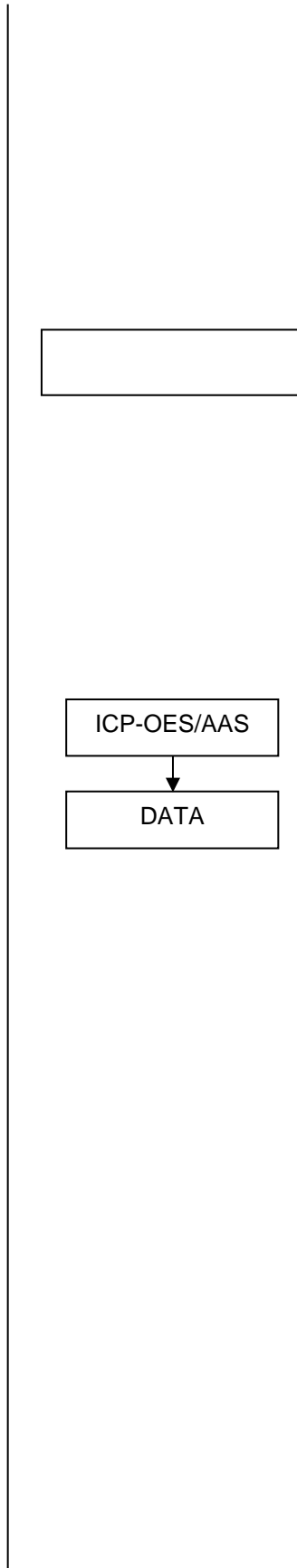
Date: Aug 21, 2025

Page 7 of 16

ATTACHMENTS

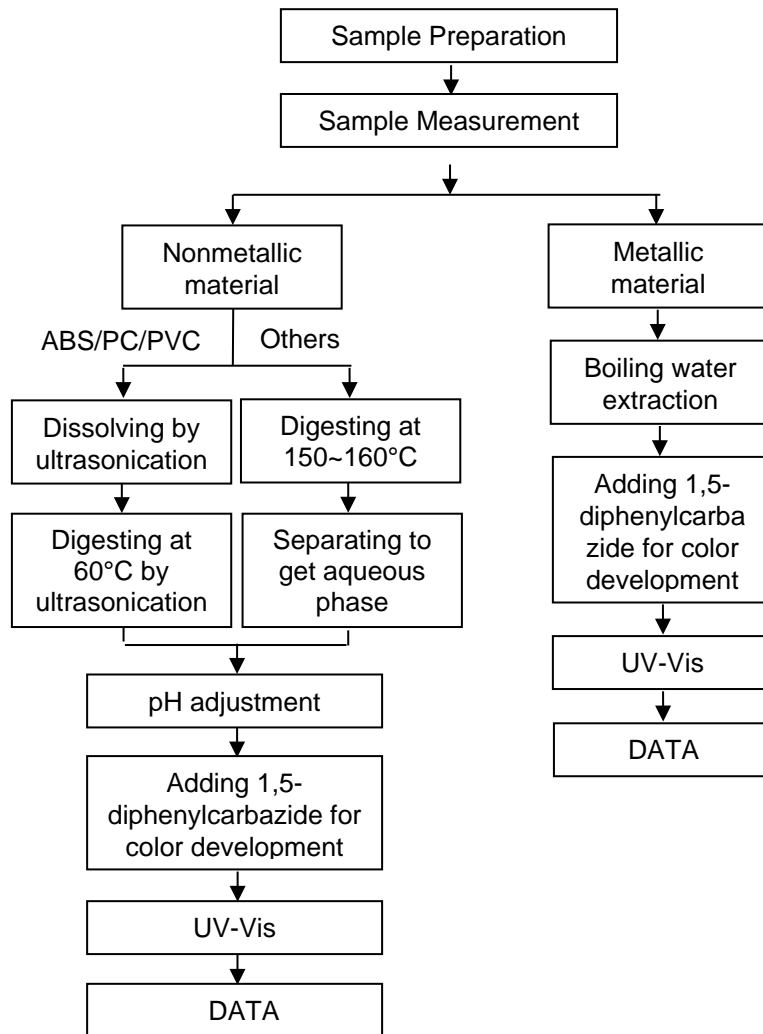
Elements Testing Flow Chart

These samples were dissolved totally by pre-conditioning method according to below flow chart.





Hexavalent Chromium (Cr(VI)) Testing Flow Chart





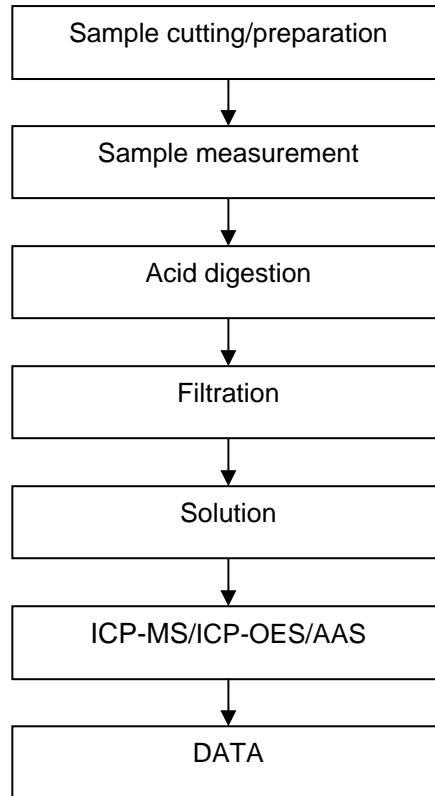
Test Report
ATTACHMENTS

No.: SHAEC25021151207

Date: Aug 21, 2025

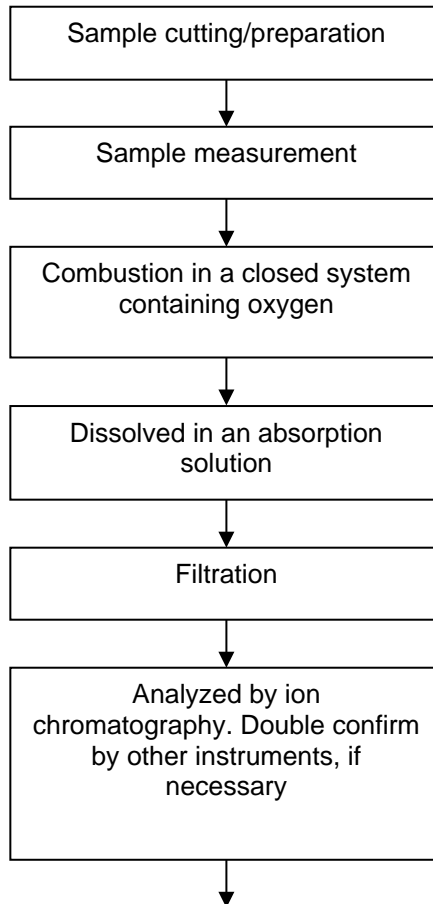
Page 10 of 16

Elements Testing Flow Chart



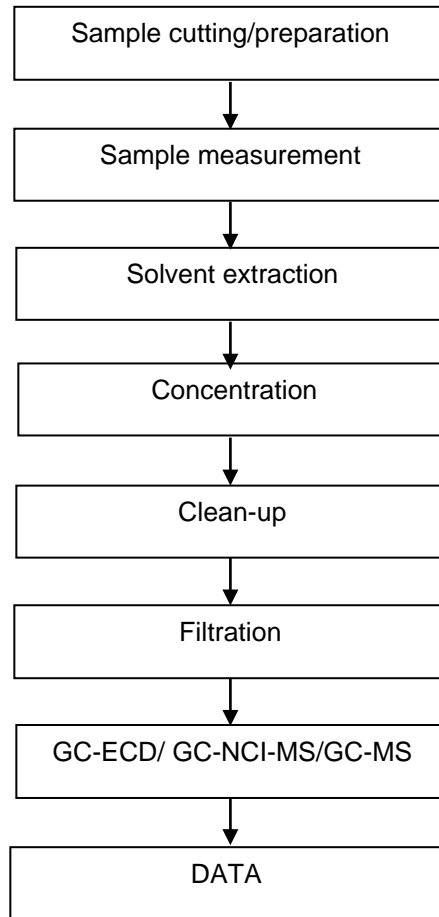


Halogen Testing Flow Chart





Chlorinated Paraffin Testing Flow Chart





Test Report

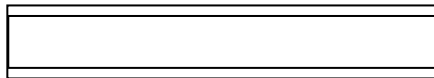
ATTACHMENTS

No.: SHAEC25021151207

Date: Aug 21, 2025

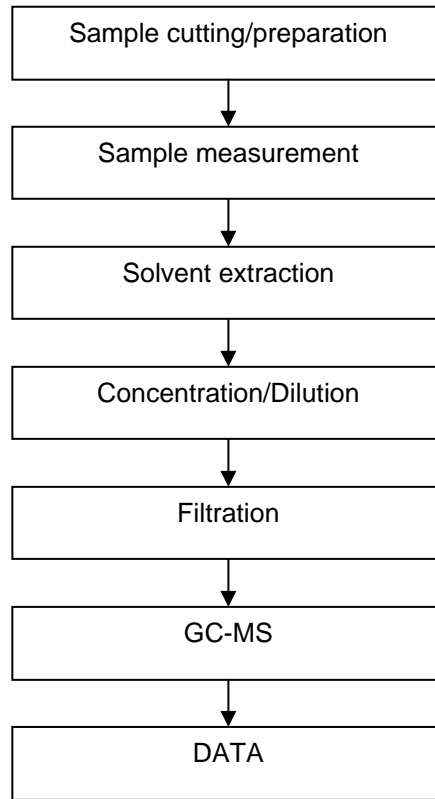
Page 13 of 16

TBBP-A Testing Flow Chart





HBCDD Testing Flow Chart





**Test Report
ATTACHMENTS**

No.: SHAEC25021151207

Date: Aug 21, 2025

Page 15 of 16

PFASs/ PFOS/PFOA Testing Flow Chart



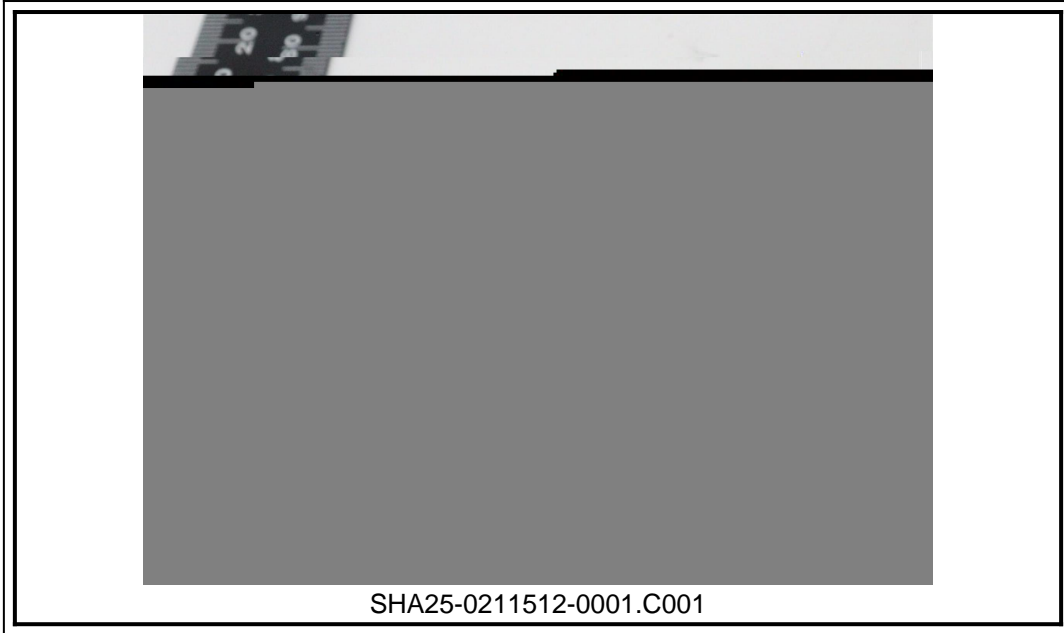
Test Report

No.: SHAEC25021151207

Date: Aug 21, 2025

Page 16 of 16

Sample Photo:



SGS authenticate the photo on original report only
*** End of Report ***